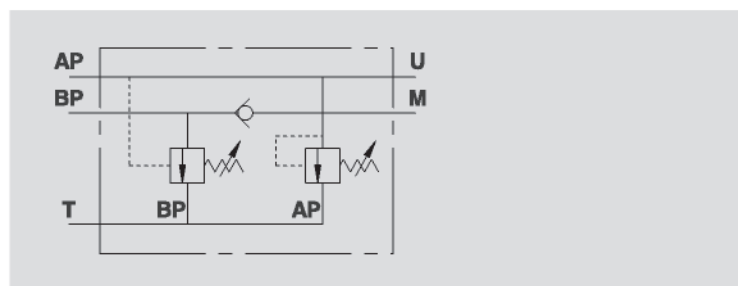
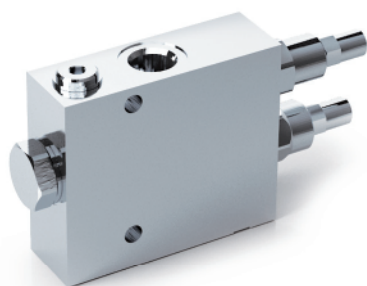


VALVOLE DI ESCLUSIONE ALTA-BASSA PRESSIONE

TWO PUMP "HI-LOW" UNLOADING VALVES

TIPO / TYPE
VABP

SCHEMA IDRAULICO
HYDRAULIC DIAGRAM



IMPIEGO:

In un circuito alimentato da due pompe in parallelo, valvola utilizzata per mandare a scarico la pompa di maggior portata al raggiungimento di un determinato valore di taratura (BP). Da questo momento in poi l'attuatore lavora con la pompa di minor portata a pressione maggiore (AP), consumando meno energia.

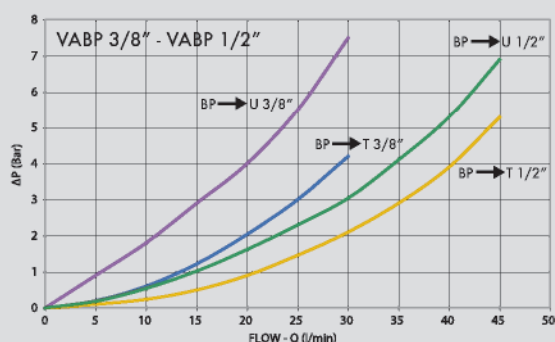
MATERIALI E CARATTERISTICHE:

Corpo: acciaio zincato.
Componenti interni: acciaio temprato termicamente e rettificato.
Guarnizioni: BUNA N standard.
Tenuta: a cono guidato. Trafilamento trascurabile.

MONTAGGIO:

Collegare BP alla pompa di maggior portata, AP alla pompa di minor portata, T allo scarico, U all'utilizzo e M all'eventuale manometro.

PERDITE DI CARICO PRESSURE DROPS CURVE



USE AND OPERATION:

In a circuit which uses two parallel pumps, this valve unloads the larger pump to tank once the pressure setting of BP has been reached. From this point the circuit will only be supplied by the smaller pump at a higher pressure AP, therefore consuming less energy.

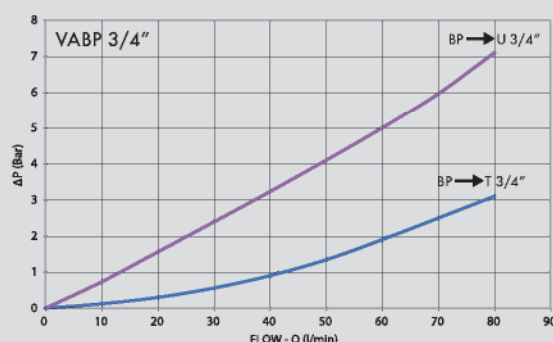
MATERIALS AND FEATURES:

Body: zinc-plated steel.
Internal components: grounded and hardened steel.
Seals: BUNA N standard.
Leakage: Guided poppet - negligible leakage.

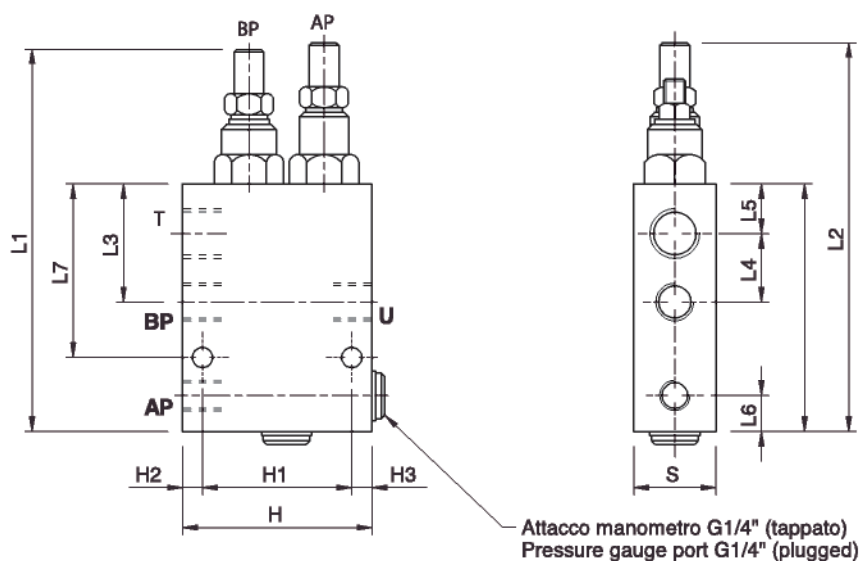
CONNECTIONS:

Connect BP to the higher flow pump, AP to the lower flow pump, T to the tank, M to the eventual manometer and U to the hydraulic circuit.

Temperatura olio: 50°C - Viscosità olio: 30 cSt
Oil temperature: 50° C - Oil viscosity: 30 cSt



CODICE CODE	SIGLA TYPE	PORTATA MAX MAX FLOW Lt. / min			T	PRESSIONE MAX MAX PRESSURE Bar	BASSA PRESSIONE MAX LOW PRESSURE Bar	PESO WEIGHT Kg
		AP	BP					
V0512	VABP 3/8"	20	40	60	350	100	1,748	
V0513	VABP 1/2"	30	50	80	350	100	2,342	
V0514	VABP 3/4"	40	80	120	350	110	3,970	



CODICE CODE	SIGLA TYPE	AP GAS	BP GAS	U GAS	T GAS	L mm	L1 mm	L2 mm	L3 mm	L4 mm	L5 mm	L6 mm	L7 mm	H1 mm	H2 mm	H3 mm	H mm	S mm
V0512	VABP 3/8"	G 1/4"	G 3/8"	G 3/8"	G 1/2"	100	142	155	50	30	20	13	69	65	8,5	6,5	80	30
V0513	VABP 1/2"	G 3/8"	G 1/2"	G 1/2"	G 3/4"	105	147	160	54	36	18	15	73	65	17	8	90	35
V0514	VABP 3/4"	G 1/2"	G 3/4"	G 3/4"	G 1"	140	187	212	52,5	42,5	20	20	95	65	27	8	100	40

MOLLE STANDARD - STANDARD SPRINGS

VALVOLA VALVE	BP (BAR)	AP (BAR)
VABP 3/8"	20-80	50-350
VABP 1/2"	20-80	50-350
VABP 3/4"	20-80	50-350