



Technical specifications

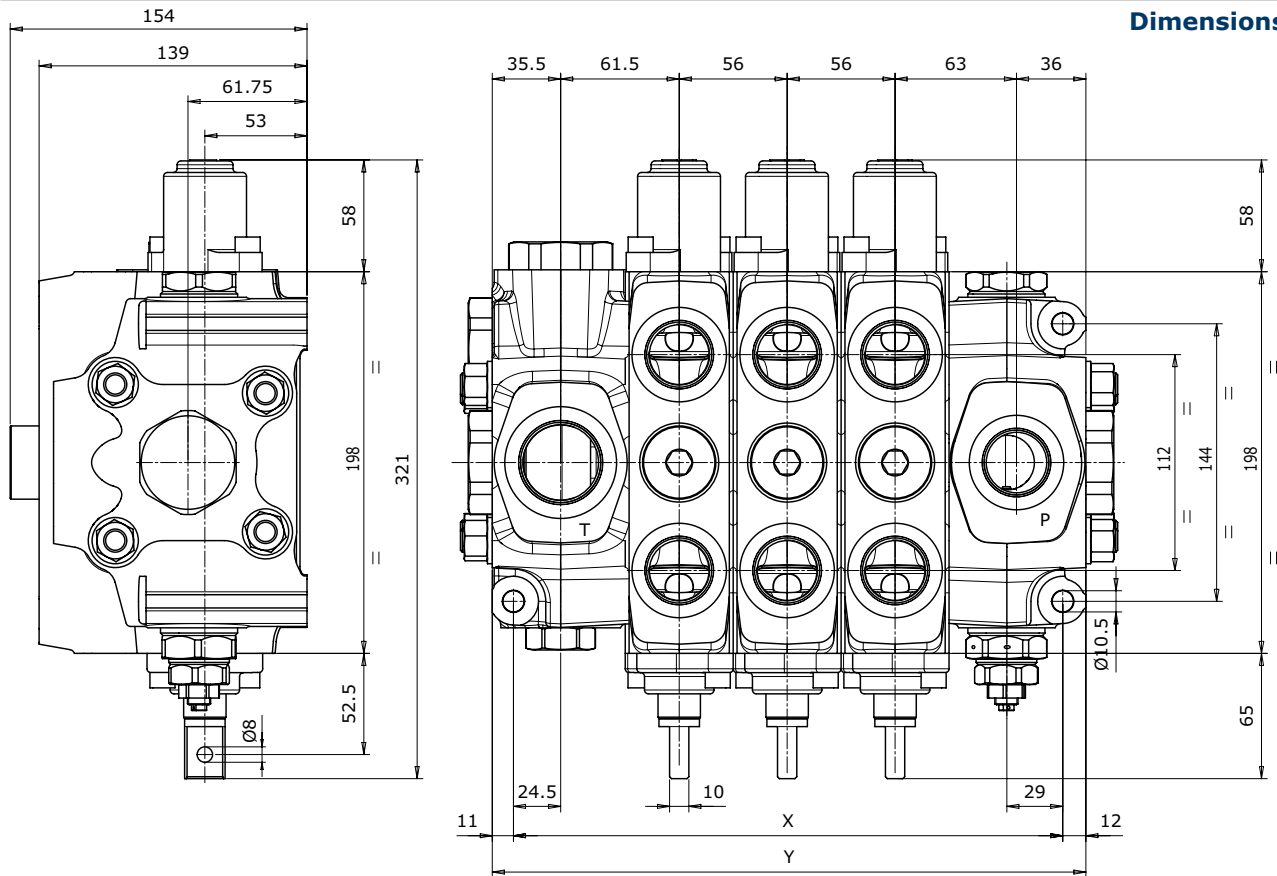
Working section number	1 - 12
Rated flow	250 l/min - 67 GPM
Rated pressure	275 bar - 4000 PSI
Spool stroke	9,5 + 9,5 mm
Spool pitch	56 mm
Circuit type	Parallel, tandem

Applications

Refuse trucks, Wheel loaders, Hook and Skip loaders

HC-DVS20 is a new family in the broad range of Hydrocontrol sectional valves. The valve is specially indicated for Garbage Refuse trucks, Hook loaders, Wheel loaders. The innovative design allows it to manage of very high flows comparing to the overall dimensions. The valve has high control characteristics, smooth and precise in operation.

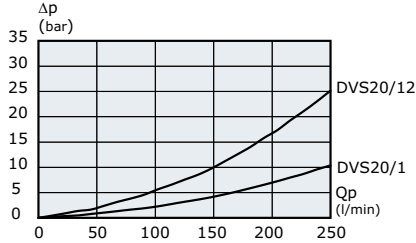
Dimensions



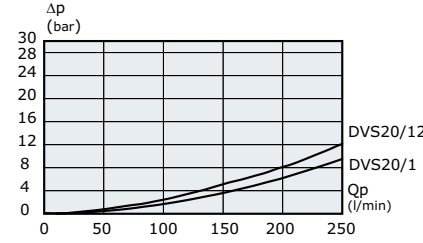
TYPE	/1	/2	/3	/4	/5	/6	/7	/8	/9	/10	/11	/12
X (mm)	173	229	285	341	397	453	509	565	621	677	733	789
Y (mm)	196	252	308	364	420	476	532	588	644	700	756	812
Weights (kg)	25	34	43	52	61	70	79	88	97	106	115	124
PORTS	Inlet (P)			Ports (A-B)			Outlet (T)			Outlet (HPCO)		
BSP Thread (ISO - 228)	G 1			G 1			G 1 1/4			G 1 1/4		
UN-UNF Thread (ISO - 725)	1 5/16 - 12 UNF			1 5/16 - 12 UNF			1 5/8 - 12 UNF			1 5/8 - 12 UNF		
SAE 3000 Flange	1"MA - 1"UNC			-			1"MA - 1"UNC			1"MA - 1"UNC		

Typical curves

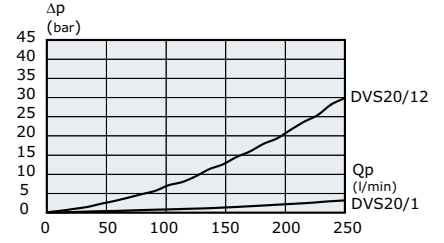
Pressure drop (P - A/B)



Pressure drop (A/B - T)



Pressure drop (P - T)

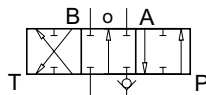


Indicated values have been tested with standard sectional valve and W001A spools.

Spool type

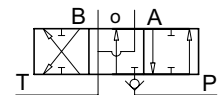
W001

3 positions double-acting



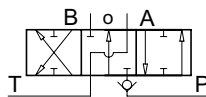
W002

3 positions double-acting
A and B to tank



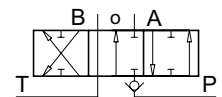
W003

3 positions double-acting
A to tank B blocked



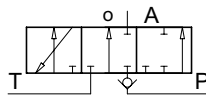
W004

3 positions double-acting
A blocked B to tank



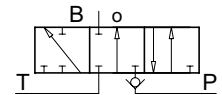
W005

3 positions
single-acting on A



W006

3 positions
single-acting on B



Spools are available in standard version (type A), metered version (type B) and with restricted connection to tank.

Features

The valve is available with manual, hydraulic remote, pneumatic, electrohydraulic and electropneumatic controls. Numerous configurations and solutions are possible. Working sections have auxiliary valves and a broad range of interchangeable spools. Larger sections are available to manage higher flows on tank line (Garbage compactors).