



# GPS

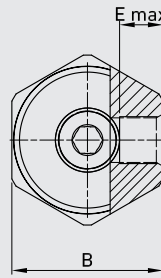
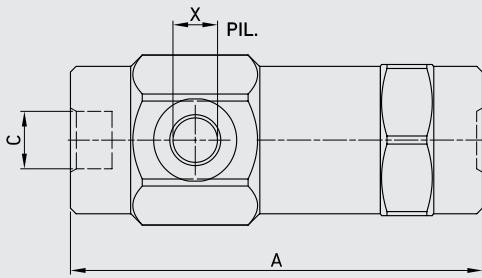
## 3 WAYS SINGLE PILOT OPERATED CHECK VALVES

Edition. 21.0

### CS Carbon Steel

- Type: 3-ways single pilot operated check valves with zincplated steel body
- Sizes: from DN6 up to DN25
- Ends: BSP
- O-Rings: NBR
- Pressure: up to PN400
- Temp range: from -20°C to +100°C





### CODE DESCRIPTION STRUCTURE

**GPS G1/4 2,5 V**

**Type and way of valve**

GPS

**Port size**

- G 1/4
- G 3/8
- G 1/2
- G 3/4
- G 1

**Cracking pressure**

- 2,5
- 5
- 3
- 0,5
- 1

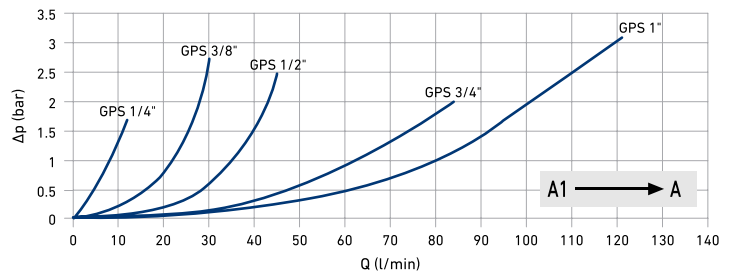
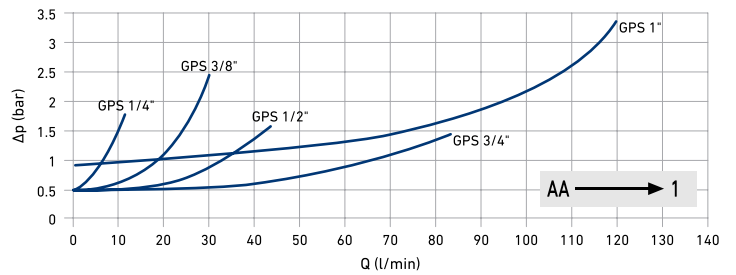
**Seals hole**

NBR

\*On request  
• 8 Bar spring

### PRESSURE DROP CURVES

Oil viscosity 24 mm<sup>2</sup>/sec. (3,5°E)  
Temperature 50° C



### GPS

TYPE	MAX FLOW l/min	MAX PRESSURE	CRACKING PRESSURE		A	B	E	C BSPP	X BSPP	PILOT RATIO	WEIGHT	CS
												Carbon Steel
												ITEM CODE
GPS G 1/4	12	MPa 40	0,25	mm	103	36	11	1/4	1/4	1:9	kg 0,650	G550202A01AARAA
		Psi 5800	36,25	inch	4,06	1,42	0,43				lb 1,43	
GPS G 3/8	30	MPa 40	0,5	mm	109	40	11,5	3/8	1/4	1:6	kg 0,820	G550203A01AARAA
		Psi 5800	72,5	inch	4,29	1,57	0,45				lb 1,81	
GPS G 1/2	45	MPa 35	0,3	mm	120	42	11	1/2	1/4	1:4,5	kg 0,960	G550204A01AAPAA
		Psi 5075	43,5	inch	4,72	1,65	0,43				lb 2,12	
GPS G 3/4	85	MPa 35	0,05	mm	131	55	14	3/4	1/4	1:3,7	kg 1,950	G550205A01AAPAA
		Psi 5075	7,25	inch	5,16	2,17	0,55				lb 4,30	
GPS G 1	120	MPa 35	0,1	mm	165	55	14	1	1/4	1:3,5	kg 2,350	G550206A01AAPAA
		Psi 5075	14,5	inch	6,50	2,17	0,55				lb 5,18	